

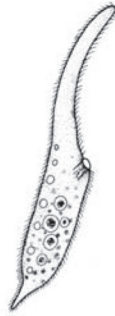
Common Freshwater Microorganisms



Amoeba



Euplotes



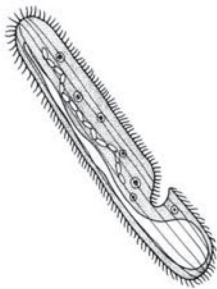
Dileptus



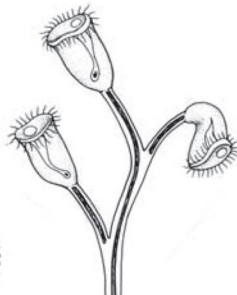
Euglena



Peranema



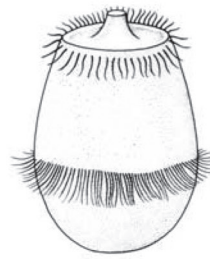
Spirostomum



Carchesium



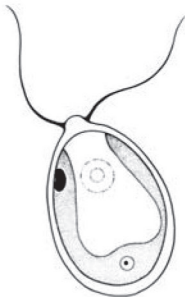
Paramecium



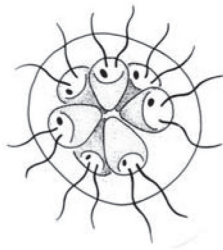
Didinium



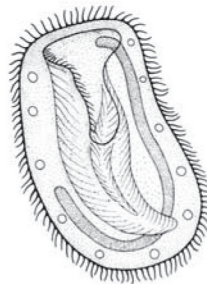
Chilomonas



Chlamydomonas



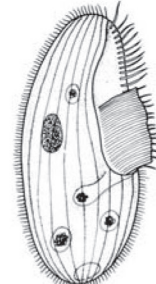
Pandorina



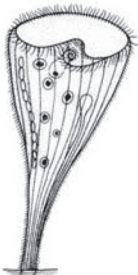
Bursaria



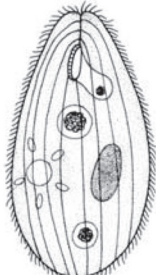
Vorticella



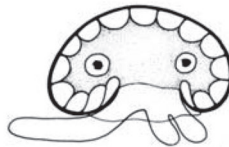
Blepharisma



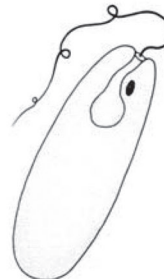
Stentor



Tetrahymena



Arcella



Haematococcus



*Dinoflagellate
(Gymnodinium
aeruginosum)*