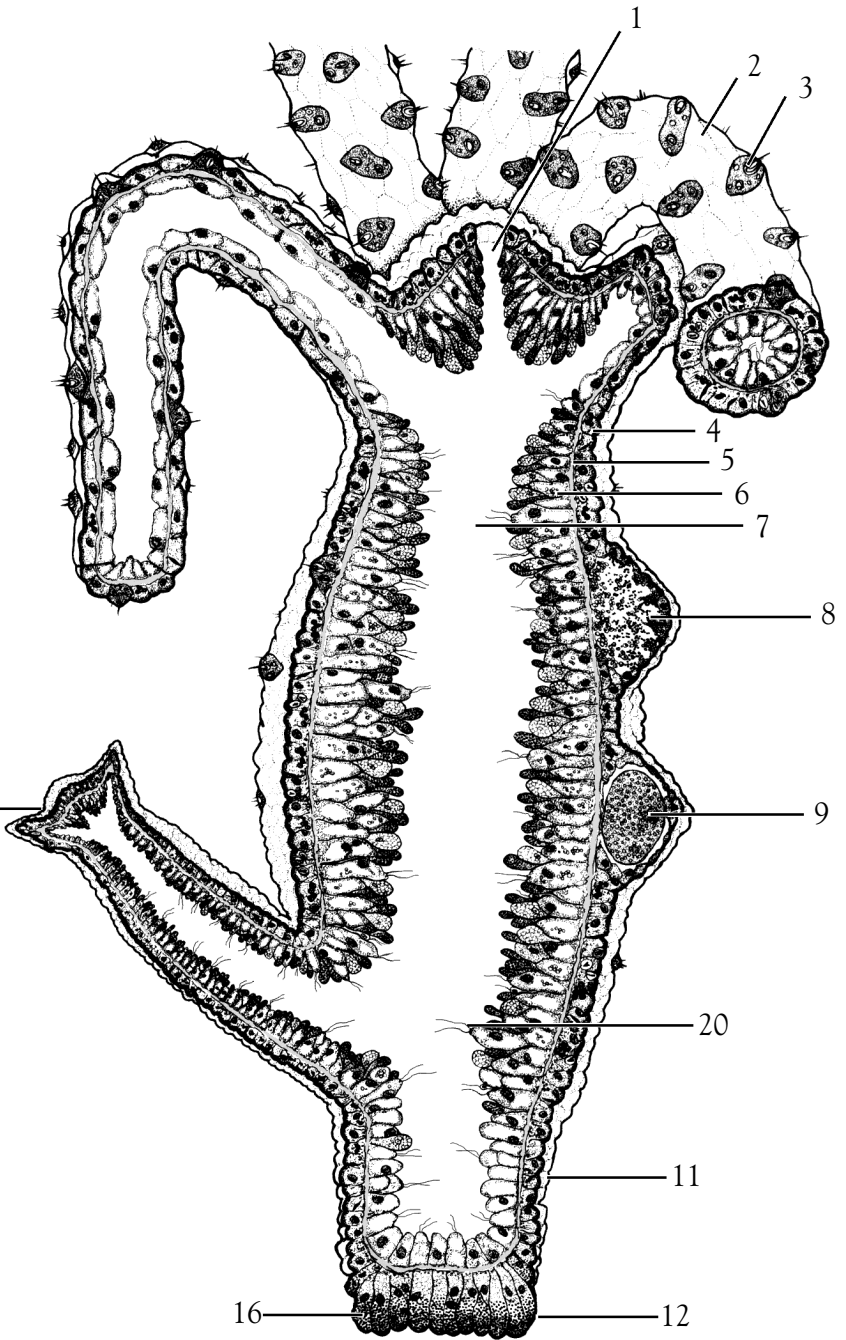
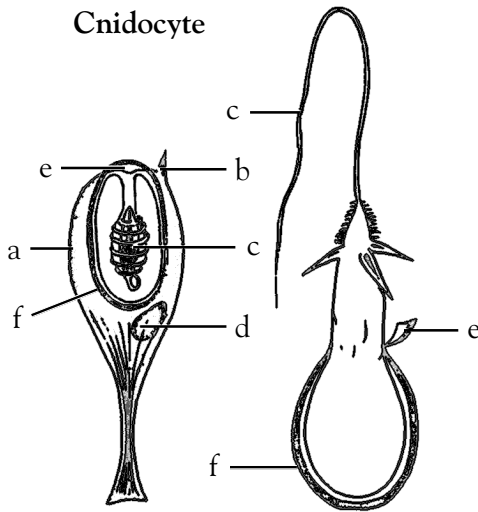
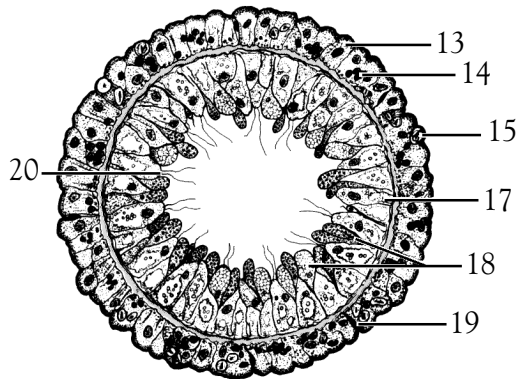


Hydrozoa Anatomy

Cnidocyte



Cross Section



- 1. Mouth
- 2. Tentacle
- 3. Nematocyst battery
- 4. Epidermis
- 5. Mesoglea
- 6. Gastrodermis
- 7. Gastrovascular cavity
- 8. Testis
- 9. Ovary
- 10. Bud

- 11. Stalk
- 12. Foot
- 13. Epitheliomuscular cell
- 14. Interstitial cell
- 15. Cnidoblast
- 16. Glandulomuscular cell
- 17. Nutritive cell
- 18. Gland cell
- 19. Sensory cell
- 20. Cilia

Cnidocyte (before and after discharge)

- a. Cnidoblast
- b. Cnidocil
- c. Thread tube
- d. Nucleus
- e. Cap
- f. Nematocyst