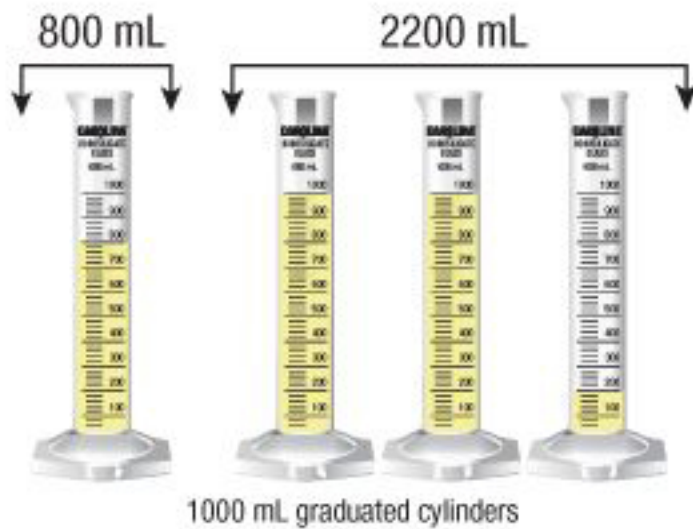


Human Body: Urinary System

The urinary system filters extra water and waste products from the blood to help maintain proper fluid balance inside the body. An elaborate system of tubes and tubules intertwines with arteries and veins within the kidneys to allow for maximum excretion of waste products, such as various salts and proteins. The ureters carry this waste to the bladder, where it is stored until excretion.

Normal daily urine output range:



Urinary System

Ureters are long, thin tubes that carry urine from the kidneys (where it is produced) to the bladder.

The **bladder** is a muscular sac that stores urine.

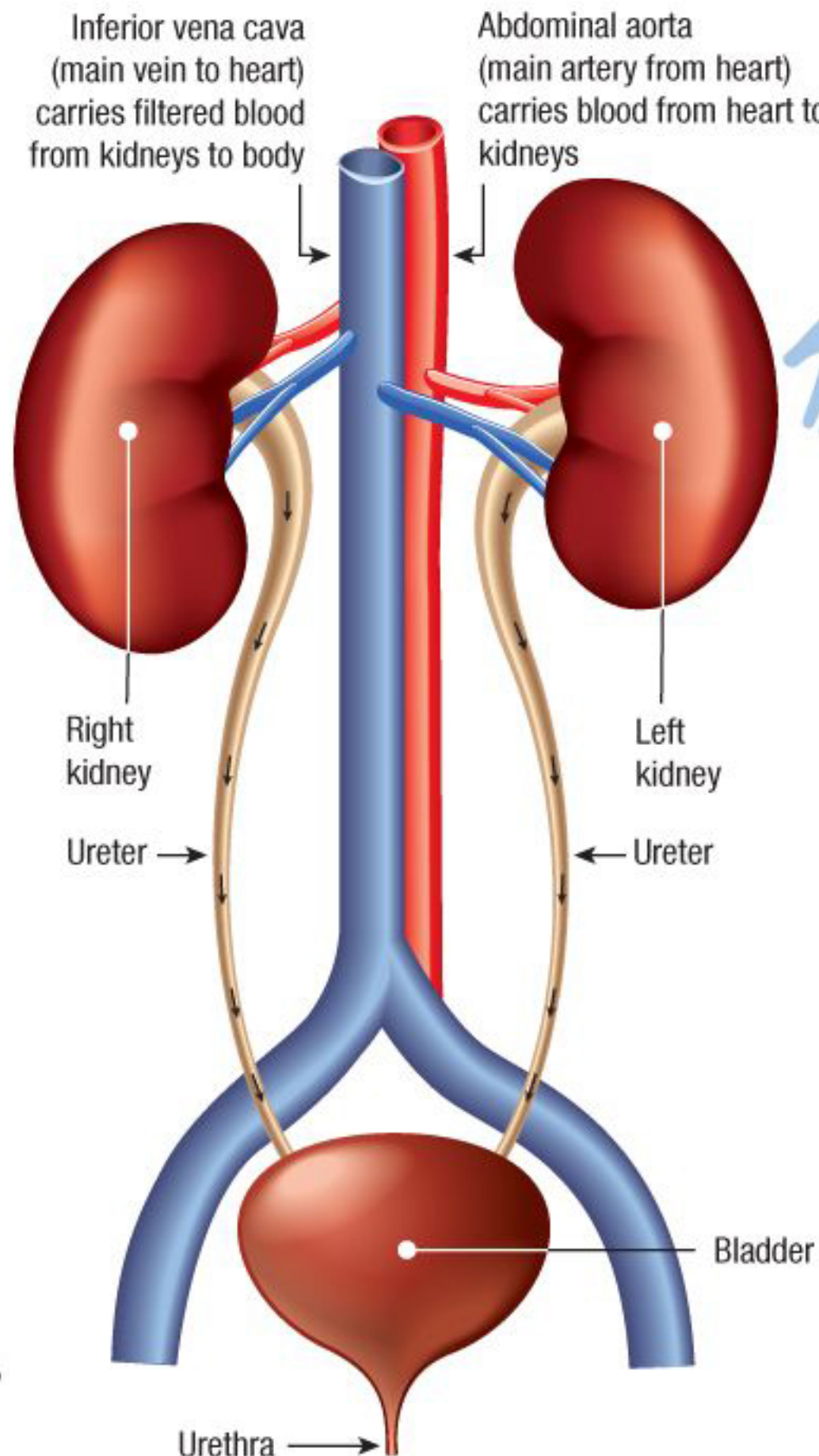
The **urethra** is a narrow tube connected to the bladder that removes urine from the body.

Kidneys

The kidneys are found in the upper abdomen on each side of the spine. These fist-size organs filter waste products out of the bloodstream and produce urine.

Nephrons

Nephrons contain a network of tubes, veins, and arteries that intertwine to exchange salts, wastes, and fluids to remove them from the bloodstream.



Glomerulus

A glomerulus is a small, round pocket within the kidneys that uses concentration gradients to remove nitrogenous waste and salts from the blood vessels that pass through it.

